

NEWPORT HARBOR  
YACHT CLUB

Inside Race Course  
Chart

2007-2008

SAILING INSTRUCTIONS

**MARKS**

**PERMANENT MARKS**

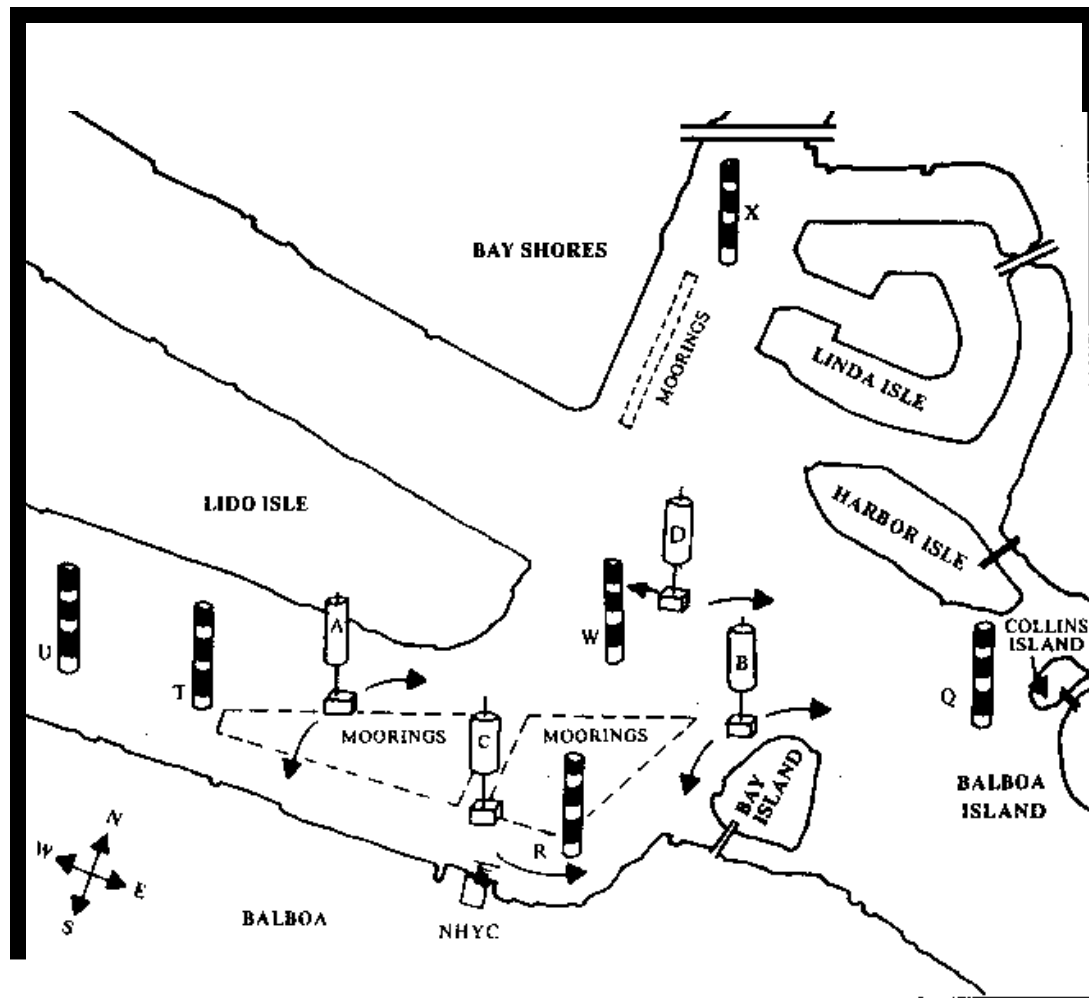
Marks **Q, R, T, U, W** and **X** are permanent, yellow spars.

**TEMPORARY MARKS**

Marks **A** (Southeast end of Lido Isle),  
**B** (Northwest side of Bay Island),  
**C** (North of NHYC's main dock)  
**D** (To leeward or immediately to windward of the start and finish lines)

are temporary, yellow shapes placed by the Race Committee in the areas shown on the Course Chart.

The temporary marks may be moved by the Race Committee to meet wind directions and velocity prevailing at the time of the race.



# SAILING INSTRUCTIONS

## 1. RULES

1.1. The regatta will be governed by the *rules* as defined in the Racing Rules of Sailing (RRS).

## 2. CHANGES IN SI's

2.1. Any change in the sailing instructions will be posted not fewer than thirty (30) minutes before it will take effect.

## 3. RACING AREA

3.1. The Racing Area for all boats will be in the harbor north of the main dock of NHYC.

3.2. Any competitor that willfully makes contact with a moored boat may be subject to protest.

## 4. COURSES AND MARKS

4.1. The diagram on the reverse side shows the courses and location of marks.

4.2. All marks are to be left to port unless otherwise indicated.

4.3. The course indicator for each class will be displayed or announced at or before the warning signal for that class.

## 5. START/FINISH

5.1. The Start/Finish line will be a straight line between a staff with an orange flag on the RC signal boat and an orange ball approximately to port.

5.2. Races will be started using Appendix Q,

5.3. The order of start will be: H20A, H20B, L12, **or as stated by the Race Committee.**

5.4. Five (5) boats will constitute a class entitled to start. Upon elimination of a class, the starting times of succeeding classes will advance accordingly. *Competitors must be alert for the display and/or announcement of their class indicator at the warning signal for each race.*

5.5. Boats whose warning signal has not been made shall keep clear of the starting area and of boats *starting* and *finishing*. When not *racing*, a boat interfering with any boat that is *racing* is subject to protest.

5.6. The start and finish line marks are not marks of the course except when *starting* or *finishing*.

## 6. PENALTY SYSTEM

6.1 For the Harbor 20 class rules 44.1 and 44.2 are changed so that only one turn including one tack and one gybe, is required.

## 7. TIME LIMIT

7.1. The time limit for the first boat in each class to finish will be one (1) hour. Boats failing to finish within ten (10) minutes after the first boat finishes will be scored "DNF".

## 8. PROTESTS

8.1. RRS 61.1 is changed by adding this sentence: "When a boat intends to protest she shall notify the Race Committee at the finishing line and inform the Race Committee of the identity of the other boat involved in the incident."

8.2. Protests shall be written on forms available at the front desk of NHYC and shall be delivered to the front desk no later than thirty (30) minutes after the Race Committee Boat has returned to the dock.

8.3. Protests will be heard monthly, in the order determined by the Protest Committee.

8.4. It is the sole responsibility of each boat involved to be ready and have witnesses available when the hearing is called.

8.5. RRS 66 is changed by adding this sentence: "On the last day of racing, a *party* to the hearing may ask for a reopening no later than one (1) hour after being informed of the decision."

## 9. SCORING

### 9.1 HIGH POINT PERCENTAGE SCORING SYSTEM FOR LONG SERIES

9.1.1 To qualify for inclusion in the final series results a Harbor 20 boat shall compete in (i.e., come to the starting area for) at least 75% of the races completed. To qualify for inclusion in the final series results a Lehman 12 boat shall compete in (i.e., come to the starting area for) at least 67% of the races completed.

9.1.2 Define 'N' to be the number of boats that compete in a particular race. Each boat finishing that race and not thereafter retiring or being disqualified will be scored as follows:

<u>Finishing place</u>	<u>Score</u>
------------------------	--------------

First	N
Second	N-1
Third	N-2
Fourth	N-3
and so on	

All other boats that compete in that race, including any that finish and thereafter retire or are disqualified, will score 0 points. Boats that do not compete in that race (DNC) will not be scored.

9.1.3 The series score for each boat will be a percentage calculated as follows: divide the sum of her race scores by the sum of the points she would have scored if she had placed first in every race in which she competed, excluding her worst score (An excluded race counts as a race to qualify a boat for a series score, but not as one of her scored races.); multiply the result by 100. The qualified boat with the highest series score is the winner, and others are ranked accordingly.

9.2 Daily scoring for the purpose of awarding Lehman 12 perpetual trophies will be calculated using the low point scoring system except that if a boat completes four (4) or fewer races her score will be the total of her race scores.

## 10. TROPHIES

10.1 Overall trophies will be awarded on February 10, 2007 after racing.

10.2 The **St. Cicero Trophy** will be awarded to the daily winner of the Lehman 12 'A' class for Nov. 18, 2007.

10.3 The **Harry Mann Trophy** will be awarded to the daily winner of the Lehman 12 'A' class for Jan. 20, 2008.

10.4 The **Humphrey Bogart Trophy** will be awarded to the daily winner of the Lehman 12 'A' class for Feb. 10, 2008.